



Artikelbezeichnung

Größe

Artikel-Nr.

Warengruppe

2527

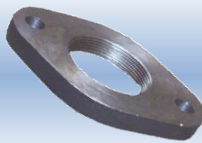


Blindflansch aus Stahl **St37.2, DIN 2527, schwarz**

DN15	PN06	2527015PN06
DN15	PN16	2527015
DN20	PN16	2527020
DN20	PN40	2527020PN40
DN25	PN06	2527025PN06
DN25	PN16	2527025
DN32	PN16	2527032
DN40	PN16	2527040
DN50	PN16	2527050
DN50	PN40	2527050PN40
DN65	PN06	2527065PN06
DN65	PN16	2527065
DN80	PN06	2527080PN06
DN80	PN10	2527080PN10
DN80	PN16	2527080PN16
DN80	PN40	2527080PN40
DN100	PN06	2527100PN06
DN100	PN16	2527100PN16
DN100	PN40	2527100PN40
DN125	PN16	2527125
DN150	PN16	2527150

C/A01.01

2558



Ovalflansch aus Stahl **ST 37.1, PN06, DIN2558**

A25	1"	2558025
A40	1 1/2"	2558040
A50	2"	2558050
A80	3"	2558080

C/A01.01

V2565






Gewindeflansch aus Stahl **St37.1, PN6, DIN2565, verzinkt**




1"	DN25	V256506
1 1/2"	DN40	V256508
2"	DN50	V256509

C/A01.01



	<u>Artikelbezeichnung</u>	<u>Größe</u>	<u>Artikel-Nr.</u>	<u>Warengruppe</u>	
<u>V2566</u>	 Gewindeflansch mit Ansatz aus Stahl St37.1 , PN10/16, DIN 2566, verzinkt	1/2"	DN15	V256604	C/A01.01
		3/4"	DN20	V256605	
		1"	DN25	V256606	
		1 1/4"	DN32	V256607	
		1 1/2"	DN40	V256608	
		2"	DN50	V256609	
		2 1/2"	DN65	V256610	
		3"	DN80	V256611	
		4"	DN100	V256612	
		<u>S2566</u>	 Gewindeflansch mit Ansatz aus Stahl St37.1 , PN10/16, DIN 2566, schwarz	3/8"	
1/2"	DN15			S256604	
3/4"	DN20			S256605	
1"	DN25			S256606	
1 1/4"	DN32			S256607	
1 1/2"	DN40			S256608	
2"	DN50			S256609	
2 1/2"	DN65			S256610	
3"	DN80			S256611	
<u>2576</u>	 Flansch glatt aus Stahl St37.2, PN10, DIN2576			33,7mm	DN25
		42,4mm	DN32	2576032	
		48,3mm	DN40	2576040	
		60,3mm	DN50	2576050	
		76,1mm	DN65	2576065	
		88,9mm	DN80	2576080	
		114,3mm	DN100	2576100	
		133,0mm	DN125	2576125	
		158,3mm	DN150	2576150	



	<u>Artikelbezeichnung</u>	<u>Größe</u>	<u>Artikel-Nr.</u>	<u>Warengruppe</u>	
2631	 Vorschweißflansch aus Stahl RST/C22, PN06, DIN2631	33,7mm	DN25	2631025	C/A01.01
		42,4mm	DN32	2631032	
		48,3mm	DN40	2631040	
		60,3mm	DN50	2631050	
		76,1mm	DN65	2631065	
		88,9mm	DN80	2631080	
		114,3mm	DN100	2631100	
		168,3mm	DN150	2631150	
2633	 Vorschweißflansch aus Stahl RST/C22, PN16, DIN2633	17,2mm	DN10	2633010	C/A01.01
		21,3mm	DN15	2633015	
		26,9mm	DN20	2633020	
		33,7mm	DN25	2633025	
		42,4mm	DN32	2633032	
		48,3mm	DN40	2633040	
		60,3mm	DN50	2633050	
		76,1mm	DN65	2633065	
		88,9mm	DN80	2633080	
		114,3mm	DN100	2633100	
		139,7mm	DN125	2633125	
		168,3mm	DN150	2633150	
		219,1mm	DN200	2633200	
273,0mm	DN250	2633250			
2635	 Vorschweißflansch aus Stahl C22.8, PN40, DIN2635	21,3mm	DN15	2635015	C/A01.01
		26,9mm	DN20	2635020	
		33,7mm	DN25	2635025	
		42,4mm	DN32	2635032	
		48,3mm	DN40	2635040	
		60,3mm	DN50	2635050	
		76,1mm	DN65	2635065	
		88,9mm	DN80	2635080	
		114,3mm	DN100	2635100	



Artikelbezeichnung

Größe

Artikel-Nr.

Warengruppe

2642

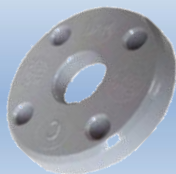


Bördelflansch aus Stahl **St37.2, PN10, DIN2642**

26,9mm	DN20	2642020
33,7mm	DN25	2642025
42,4mm	DN32	2642032
48,3mm	DN40	2642040
60,3mm	DN50	2642050
76,1mm	DN65	2642065
88,9mm	DN80	2642080
114,3mm	DN100	2642100
133,0mm	DN125	2642125/133
139,7mm	DN125	2642125/139
159,0mm	DN150	2642150/159
168,3mm	DN150	2642150/168

C/A01.01

AL2642



Losflansch aus Aluminium **beschichtet, PN10, DIN 2642 Typ C**

21,3mm	DN15	AL2642015213
26,9mm	DN20	AL2642020269
28,0mm	DN25	AL2642020280
33,7mm	DN25	AL2642025337
35,0mm	DN32	AL2642032350
42,4mm	DN32	AL2642032424
48,3mm	DN40	AL2642040483
60,3mm	DN50	AL2642050603
76,1mm	DN65	AL2642065761
88,9mm	DN80	AL2642080889
114,3mm	DN100	AL26421001143

C/A01.03

RG2566



Gewindeflansch aus Rotguß **RG5, ND10/16, Geb. PN16, DIN 2566**

3/4"	DN20	RG256605
1"	DN25	RG256606
1 1/4"	DN32	RG256607
1 1/2"	DN40	RG256608
2"	DN50	RG256609

C/A01.04



86033



Lötflansch aus Rotguß RG5, ND10/16, Geb.
PN16

Artikelbezeichnung

Größe

Artikel-Nr.

Warengruppe

RA22	DN20	86033020022
RA28	DN25	86033025028
RA35	DN32	86033032035
RA42	DN40	86033040042
RA54	DN50	86033050054
RA64	DN65	86033065064
RA76,1	DN65	86033065076
RA89	DN80	86033080089
RA108	DN100	86033100108

C/A01.04