



Artikelbezeichnung

Größe

Artikel-Nr.

Warengruppe

13S



Rohrbogen 90° aus Edelstahl **1.4571**,  
geschweißt, **Bauart 3, DIN 2605**

12,0x1,5mm	DN08	13S12015
15,0x1,5mm	DN08	13S15015
17,2x2,0mm	DN10	13S17020
18,0x1,5mm	DN10	13S18015
20,0x2,0mm	DN15	13S20020
21,3x2,0mm	DN15	13S21320
25,0x2,0mm	DN20	13S25020
26,9x2,0mm	DN20	13S26920
28,0x1,5mm	DN20	13S28015
28,0x2,0mm	DN20	13S28020
30,0x2,0mm	DN20	13S30020
33,7x2,0mm	DN25	13S33720
35,0x1,5mm	DN25	13S35015
38,0x2,0mm	DN25	13S38020
42,4x2,0mm	DN32	13S42420
44,5x2,0mm	DN32	13S44520
48,3x2,0mm	DN40	13S48326
54,0x2,0mm	DN40	13S54020
57,0x2,0mm	DN40	13S57020
60,3x2,0mm	DN50	13S60320
76,1x2,6mm	DN65	13S76126
88,9x2,6mm	DN80	13S88926
114,3x4,5mm	DN100	13S114345
114,3x2,6mm	DN100	13S114326

B/B02.01

13S

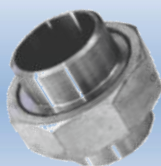


Rohrbogen 90° aus Edelstahl **1.4307**,  
geschweißt, **Bauart 3,**  
**DIN 2605**

50,0x2,0mm	DN40	13S50020
52,0x1,5mm	DN40	13S52015

B/B02.01

110HS

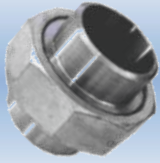




Schweißverschraubung aus Edelstahl  
**V4A, DIN EN 10242, konisch**  
**dichtend**

17,2mm	DN10	110HS172KO
21,3mm	DN15	110HS213KO
26,9mm	DN20	110HS269KO
33,7mm	DN25	110HS337KO
42,4mm	DN32	110HS424KO
48,3mm	DN40	110HS483KO
60,3mm	DN50	110HS603KO
76,1mm	DN65	110HS761KO

B/B02.05



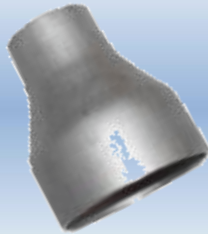
	<u>Artikelbezeichnung</u>	<u>Größe</u>	<u>Artikel-Nr.</u>	<u>Warengruppe</u>		
<b>110HS</b>	 Schweißverschraubung aus Edelstahl <b>V4A, DIN EN 10242, flach            dichtend</b>	17,2mm	DN10	110HS172FL		
		21,3mm	DN15	110HS213FL		
		26,9mm	DN20	110HS269FL		
		33,7mm	DN25	110HS337FL	B/B02.05	
		42,4mm	DN32	110HS424FL		
		48,3mm	DN40	110HS483FL		
		60,3mm	DN50	110HS603FL		
		<b>155S</b>	 Schweißbördel aus Edelstahl <b>1.4571,            DIN 2642</b>	20,0x2,0mm	DN15	155S0200
				21,3x2,0mm	DN15	155S0213
25,0x2,0mm	DN20			155S0250		
26,9x2,0mm	DN20			155S0269		
28,0x1,5mm	DN20			155S0280		
33,7x2,0mm	DN25			155S0337		
35,0x1,5mm	DN25			155S0350		
38,0x2,0mm	DN25			155S0380		
42,4x2,0mm	DN32			155S0424	B/B02.04	
44,5x2,6mm	DN32			155S0445		
48,3x2,0mm	DN40			155S0483		
54,0x2,0mm	DN40			155S0540		
57,0x2,0mm	DN40			155S0570		
60,3x2,0mm	DN50			155S0603		
76,1x2,0mm	DN65			155S0761		
88,9x2,6mm	DN80			155S0889		
108,0x3,0mm	DN100			155S1080		
114,3x2,0mm	DN100	155S1143				
<b>1130S</b>	 T-Stück aus Edelstahl 1.4571, <b>geschweißt, DIN 2615</b>	21,3x2,0mm	DN15	1130S21320		
		26,9x2,0mm	DN20	1130S26920		
		33,7x2,0mm	DN25	1130S33720		
		42,4x2,0mm	DN32	1130S42420		
		44,5x2,0mm	DN40	1130S48320	B/B02.02	
		48,3x2,0mm	DN40	1130S48320		
		60,3x2,0mm	DN50	1130S60320		
		76,1x2,0mm	DN65	1130S76120		
		88,9x2,0mm	DN80	1130S88920		
		114,3x2,0mm	DN100	1130S114320		



	<u>Artikelbezeichnung</u>	<u>Größe</u>	<u>Artikel-Nr.</u>	<u>Warengruppe</u>
<b>1300S</b>	Schweiß-Rohrkappe aus Edelstahl <b>1.4571</b>	21,3x2,0mm	DN15 1300S21320	B/B02.06
		26,9x2,0mm	DN20 1300S26920	
		28,0x1,5mm	DN25 1300S28015	
		33,7x2,0mm	DN25 1300S3320	
		42,4x2,0mm	DN32 1300S42420	
		48,3x2,0mm	DN40 1300S48320	
		60,3x2,0mm	DN50 1300S60320	
		76,1x2,0mm	DN65 1300S76120	
		88,9x2,0mm	DN80 1300S889020	
		114,3x2,0mm	DN100 1300S114320	
<b>1240S</b>	Konzentrische Reduzierstücke aus Edelstahl <b>1.4571, nahtlos, DIN 2616</b>	26,9x2,3/17,3x1,8mm	1240S0269173	B/B02.03
		26,9x2,3/21,3x2,0mm	1240S0269213	
		33,7x2,6/21,3x2,0mm	1240S0337213	
		33,7x2,6/26,9x2,0mm	1240S0337269	
		34,0x2,0/28,0x1,5mm	1240S0340280	
		42,4x2,0/21,3x2,0mm	1240S0424213	
		42,4x2,0/26,9x2,0mm	1240S0424269	
		42,4x2,0/33,7x2,0mm	1240S0424337	
		48,3x2,0/21,3x2,0mm	1240S0483213	
		48,3x2,0/26,9x2,0mm	1240S0483269	
		48,3x2,0/33,7x2,0mm	1240S0483337	
		48,3x2,0/42,4x2,0mm	1240S0483424	
		60,3x2,0/26,9x2,0mm	1240S0603269	
		60,3x2,0/33,7x2,0mm	1240S0603337	
		60,3x2,0/42,4x2,0mm	1240S0603424	
		60,3x2,0/48,3x2,0mm	1240S0603483	
		76,1x2,3/33,7x2,0mm	1240S0761337	
		76,1x2,3/42,4x2,0mm	1240S0761424	
76,1x2,3/48,3x2,0mm	1240S0761483			
76,1x2,3/60,3x2,0mm	1240S0761603			



**1240S**



<u>Artikelbezeichnung</u>	<u>Größe</u>	<u>Artikel-Nr.</u>	<u>Warengruppe</u>
Konzentrische Reduzierstücke aus Edelstahl 1.4571, nahtlos, DIN 2616	88,9x2,3/48,3x2,0mm	1240S0889483	B/B02.03
	88,9x2,3/60,3x2,0mm	1240S0889603	
	88,9x2,3/76,1x2,3mm	1240S0889761	
	114,3x2,6/60,3x2,0mm	1240S1143603	
	114,3x2,6/76,1x2,3mm	1240S1143761	
	114,3x2,6/88,9x2,3mm	1240S1143889	
	139,7x2,9/60,3x2,3mm	1240S1397603	
	139,7x2,9/76,1x2,3mm	1240S1397761	